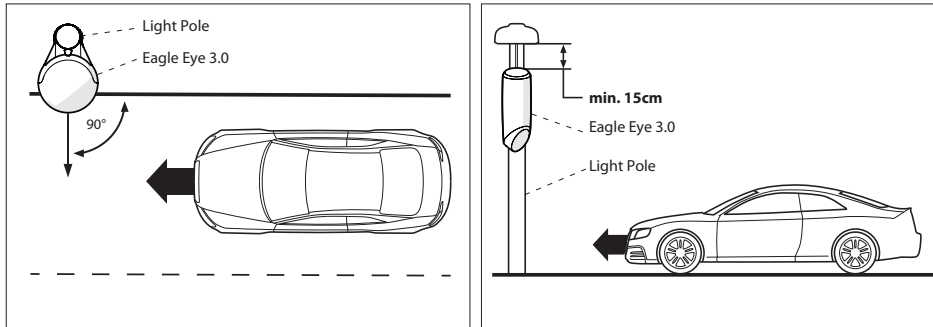




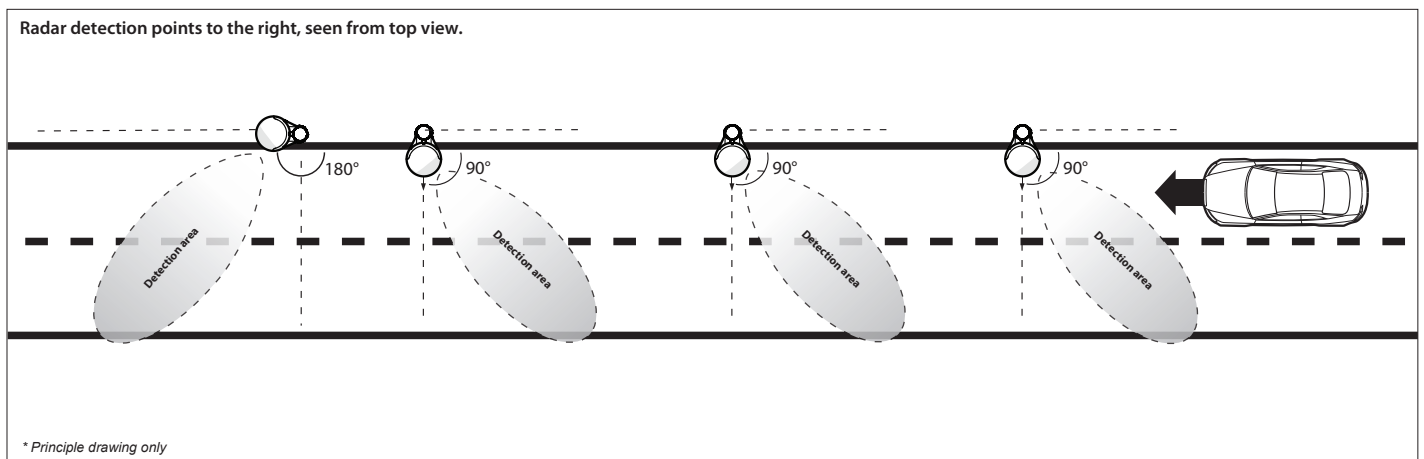
## Installation Guide **Eagle Eye 3.0**

### 1. POSITION OF EAGLE EYE 3.0

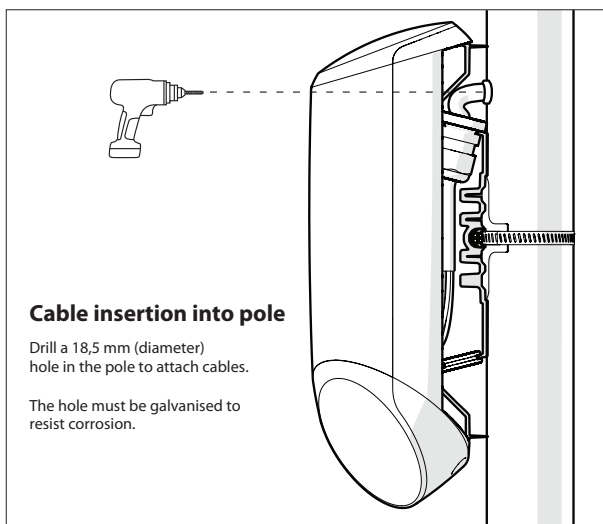


Vegetation in front of the sensor should be avoided to minimize risk of false detections.

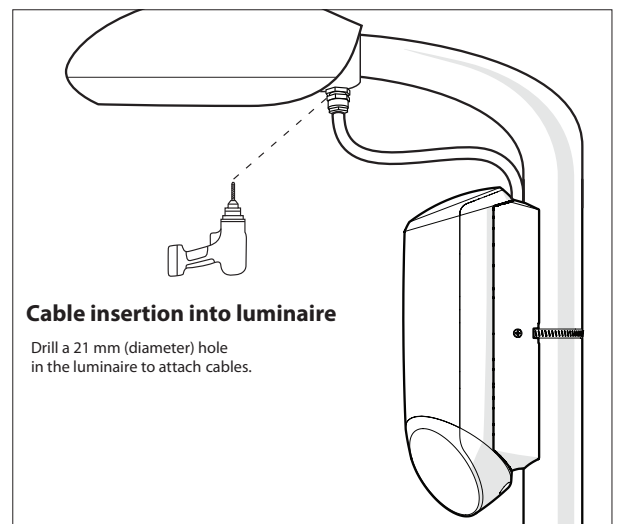
### 2. DETECTION AREA



### 3. CABLE INSTALLATION



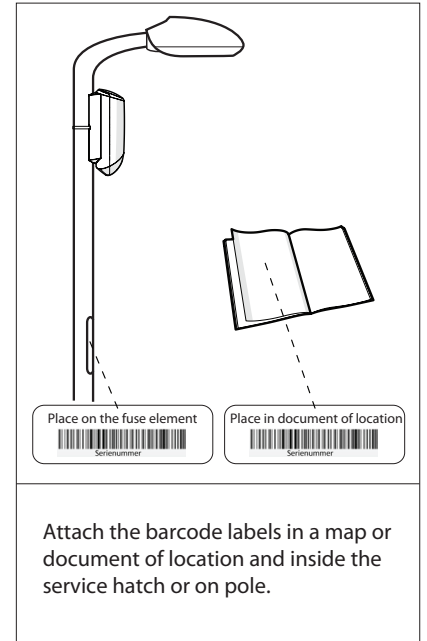
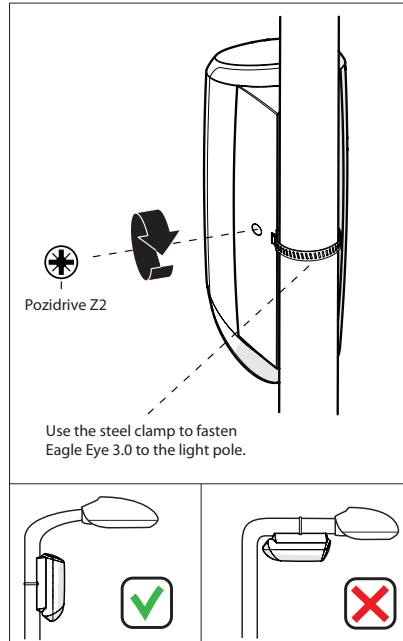
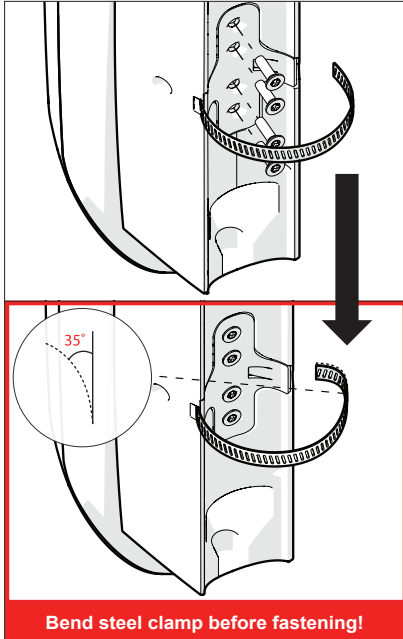
Or :



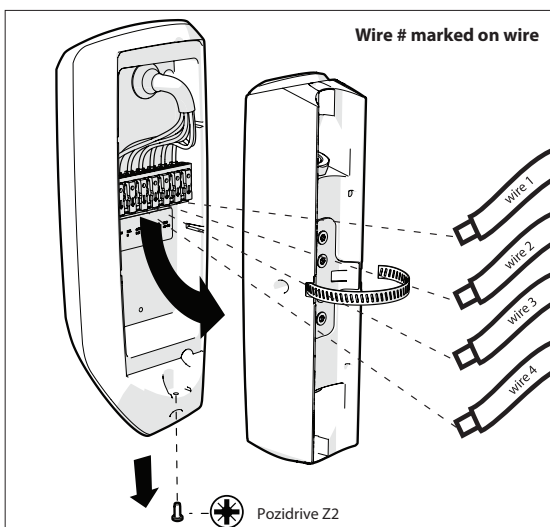


## Installation Guide **Eagle Eye 3.0**

### 4. MOUNTING EAGLE EYE 3.0



### 5. WIRE CONNECTIONS



		Wire numbering/color						
Controls		Step	AC-EM	AC-L1	AC-N	-DALI -(1-10V)	+DALI	+(1-10V)
4 - wire cable	Step	3/BK		1/BN	2/BU			
	DALI			1/BN	2/BU	3/GY	4/BK	
	1-10V			1/BN	2/BU	3/GY		4/BK

For technical support & installation related questions, contact us at:

[support@comlight.no](mailto:support@comlight.no)